

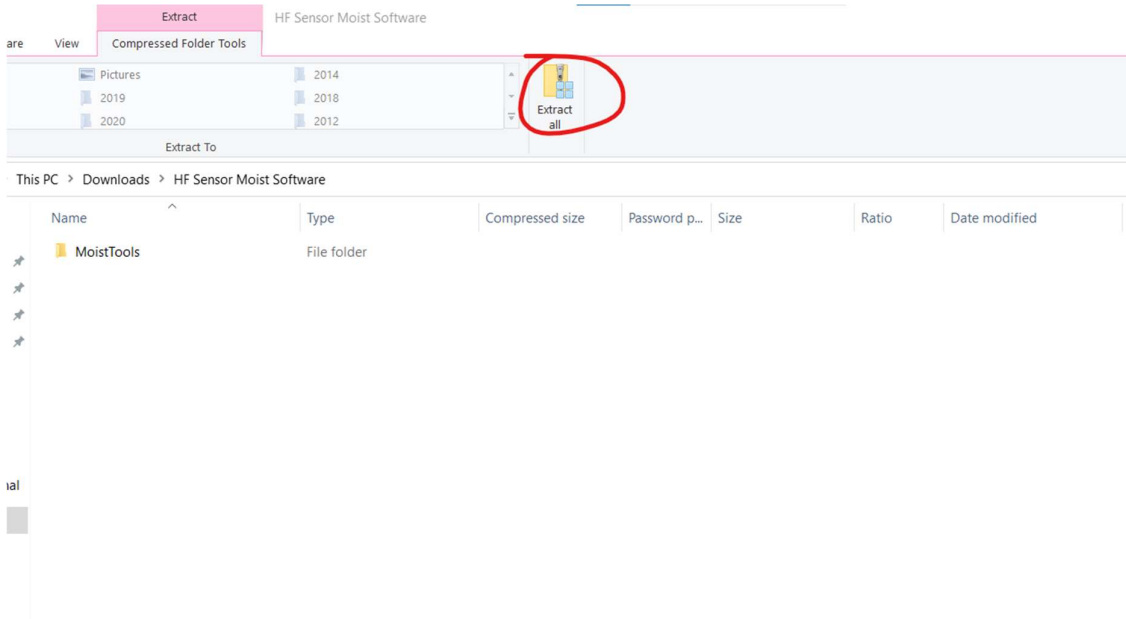
## HF Sensor Moist Software



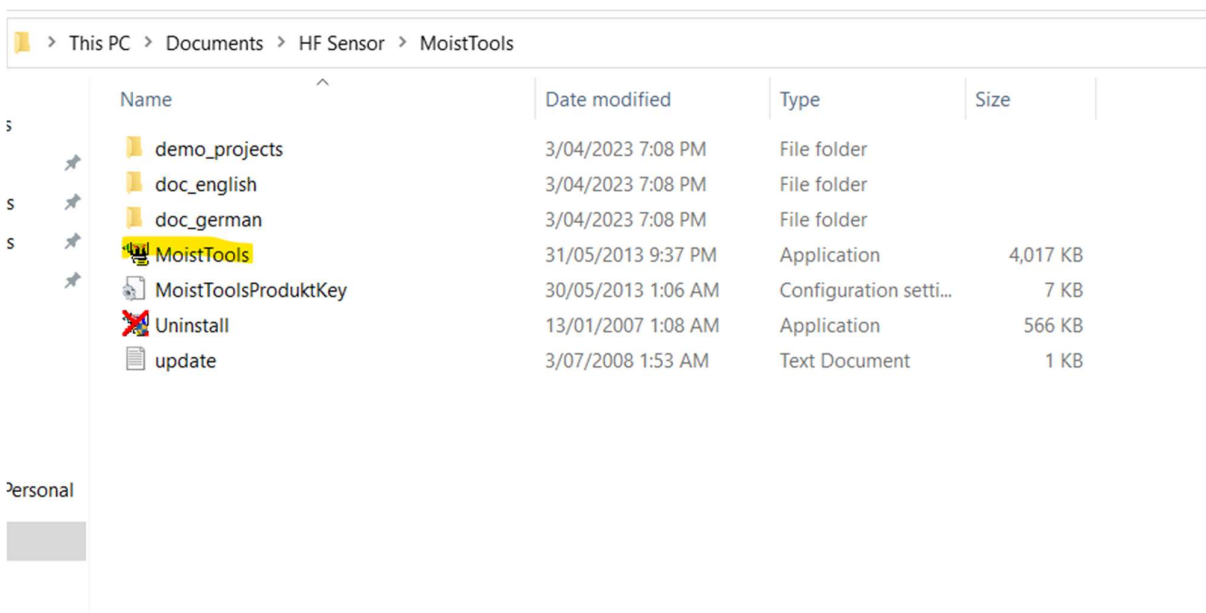
The software installer is in German so we have created this quick guide to undertake the installation and then set the language to English

Please follow these steps

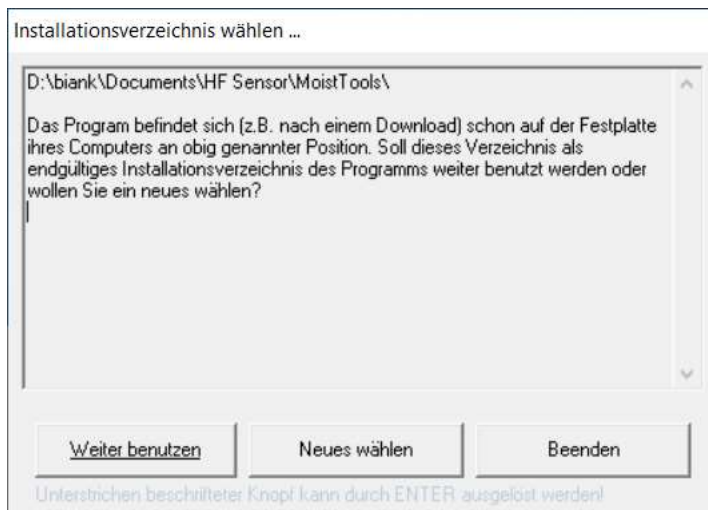
1. Either run the installer from the CD in the case or download the software from Resources tab on the HF Sensor product page on the Restore Solutions website
2. If you have downloaded the zip file from the website extract the files to your desired location



3. Run MoistTools file from the folder on your computer



4. The below screen will appear, translation is below screen shot



Choose install dir?

D:\biank\Documents\HF Sensor\MoistTools\

The program is (e.g. after a download) already on the hard drive of your computer in the position mentioned above. Do you want to continue using this directory as the final installation directory for the program or do you want to choose a new one?

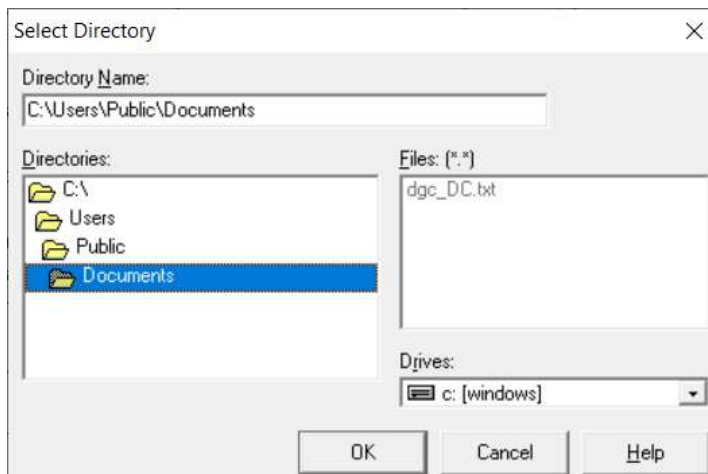
Left button - continue to use

Middle button - choose new

Right button – end

Either choose the listed directory by selecting the left button or select a new directory by clicking the middle button

5. The install confirmation screen below will appear, press ok to continue the install process



6. The following screen appears



Select project or root directory

Select a writable directory as the root or project directory for data storage! Archive directories, projects and log data are later stored in this directory.

You can also create a new directory by adding to the displayed path, which will then be used.

If several users of this computer are later to be able to access the data, it is advisable to create a folder under '(LW:)\Documents and Settings\ AllUsers\Documents'. Please navigate to this folder manually if it is not already a system suggestion is preset.

System suggestion:

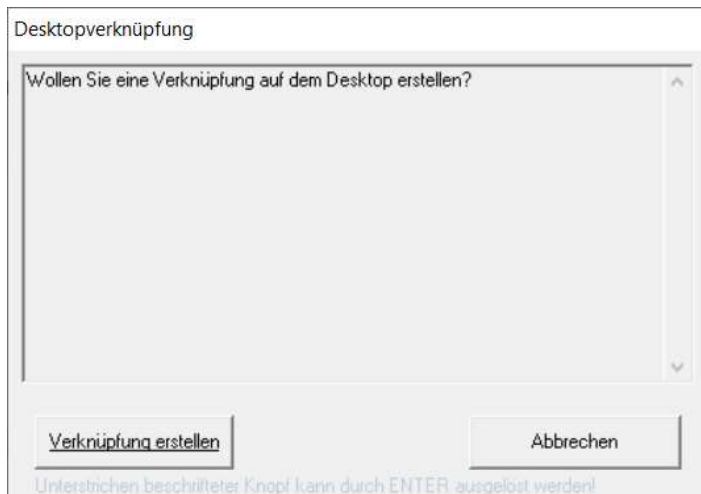
C:\Users\Public\Documents

Left button – choose directory

Right button - take over (which means say yes to the suggestion)

Make your choice, take over (right button) is the normal choice

7. The below screen appears with the translation below



## Desktop shortcut

Do you want to create a shortcut on the desktop?

Left button – create link

Right button – interrupt (don't create the shortcut)

**Suggest** clicking left button to create a shortcut

8. The below screen then may or may not appear depending on your computer setup



in order to create a link between hfs.project files and this application, you must start this program with administrator access

This just means that if a user on the computer does not have admin rights when running the desktop shortcut ensure you right click and run as administrator or give the user admin rights on the computer

9. The program should then open to the below screen and you just need to click on the below menu and selection to change the language to English

