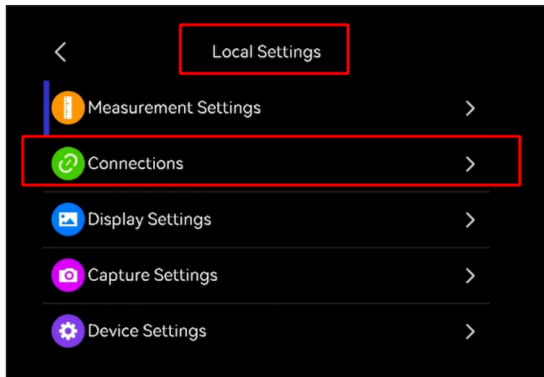
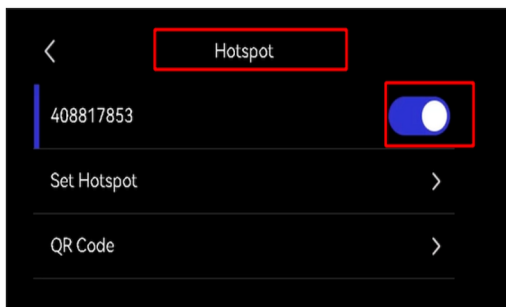


# How to Connect Viewer with Camera

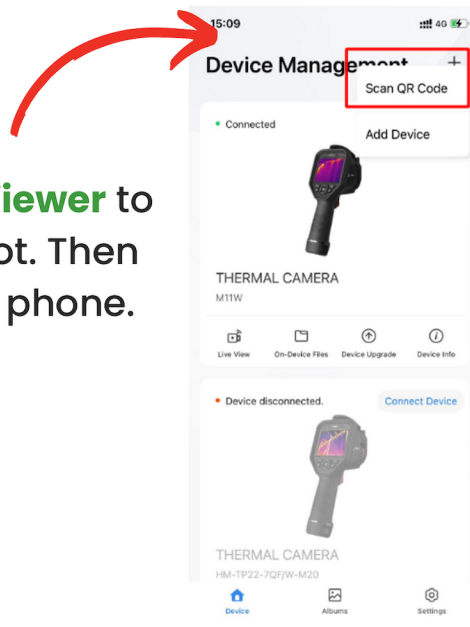
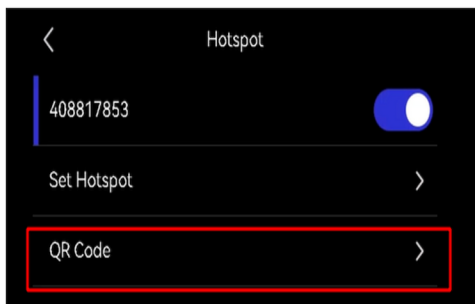
**Step 1:** Go to **Local settings** and find **Connections**



**Step 2:** Under **Connections**, find hotspots, and **Enable** the hotspots



**Step 3:** Click **QR Code** and use **Viewer** to **Scan QR Code** to join the hotspot. Then you can check live view on your phone.



CREATING HEALTHY INDOOR ENVIRONMENTS

*"On The Job" Industry Experience Since 1995*

