



EFFICIENT, POWERFUL THERMAL ANALYSIS AND REPORTING

HIKMICRO Analyzer is a powerful and free licensed PC software designed to help users manage and analyze thousands of thermal images and videos and quickly create professional reports. Compatible with files from HIKMICRO handheld thermal cameras, providing the features you need to simplify your workflow and increase your productivity.

- ◆ Free license
- ◆ Import, edit and manage files
- ◆ View, edit and analysis radiometric images and videos
- ◆ Advanced measurement and image analysis
- ◆ Batch processing with all image and measurement controls
- ◆ Quick reporting with pre-defined or customized templates



WIRELESS ANALYSIS, REPORTING AND SHARING

The HIKMICRO Viewer is a powerful and intuitive mobile application designed to help users wirelessly stream video, analyze thermal images and video, quickly create reports and share with customers and coworkers in the field. It allows you to import stored files from the camera to the mobile device. Use the app to thermally adjust levels and spans with one touch, change color palettes, adjust parameters, and more.

- ◆ Free license
- ◆ Import images and videos from camera
- ◆ Quick reporting and sharing
- ◆ Screen Stream Mirroring
- ◆ Advanced measurement and image analysis
- ◆ After-sales contacts and online support services



THERMAL IMAGE IN

MOISTURE DETECTION

Model	B20	Pocket2	M11	M20	M30
Description	Compact Fast Troubleshooting Tools	Pocket Size Design, Fits in Any Pocket	Advanced thermal imaging camera with Manual Focus		
IR Resolution	256 x 192 (49,152 Pixels)	256 x 192 (49,152 Pixels)	192 x 144 (27,648 pixels)	256 x 192 (49,152 pixels)	384 x 288 (110,592 Pixels)
SuperIR	Yes, on Captured Images				
FOV (H x V)	37.2° x 50.0°	50° x 37.2°	18.8° x 14.1°	25° x 18.8°	37.5° x 28.5°
Temperature Range	-20 °C to 550 °C (-4°F to 1022°F)	-20 °C to 400 °C (-4°F to 752°F)	-20 °C to 550 °C (-4 °F to 1022 °F)		
Frequency	25 Hz				
NETD			< 40 mK		< 35 mK
Operation Time	6 Hours	4 Hours	6 Hours x 2		4 Hours x 2
Focus Mode	Focus Free		Manual Focus		
Display	240 x 320 Resolution, 3.2"LCD Screen	640 x 480 Resolution, 3.5" LCD Touch Screen with Auto-rotation			
Visual Camera	1600 x 1200 (2 MP)		3264 x 2448 (8 MP)		
LED Flashlight	✓	✓	✓	✓	✓
Connect With App	✓	✓	✓	✓	✓
1-Tap Level & Span	x	✓	✓	✓	✓
Video Recording	x	✓	✓	✓	✓
Laser	x	x	Laser Pointer	Laser Pointer	Laser Pointer
Removable Batteries	x	x	✓	✓	✓
Interchangeable Lenses	x	x	x	x	x
Inspection Route	x	x	x	x	x
GPS & Compass	x	x	x	x	x
Viewfinder	x	x	x	x	x
Rotating Lens & Screen	x	x	x	x	x



Moisture Intrusion Detection By Thermal Cameras

Due to the special geographical location and climate, Australia often rains, some areas even have flood. At this time, rainwater can penetrate into walls and roofs. Sometimes, the signs are subtle and easy to miss until water starts dripping from the ceiling. Thermal cameras can help identify where may exist moisture before it becomes serious.

The Effects of Moisture Intrusion

◆ STRUCTURAL INTEGRITY ISSUES

Moisture intrusion can lead to structural integrity issues in roofs, floors, ceilings & beams, which in turn can lead to more property damage.

◆ MOLD GROWTH AND HEALTH

Moisture can also be particularly hazardous to health, because they can foster the perfect environment for molds to grow unchecked.

Thermal Camera and Moisture Meter kit: Better Together

◆ STEP 1

Infrared cameras to detect the area where may exist moisture. Moisture will give up its heat and form cold spot, thermal cameras allows to detect such temperature differentials and find cold spot that looks like moisture. It helps quickly locate areas of concern to investigate further.



◆ STEP 2

Using moisture meter kit to confirm and acquire moisture content reading, it enables to determine if moisture is present within the cool spots identified by the thermal camera.



Another application after detecting

Detect hot spots when drying

By using thermal camera, it allows to see the heat going up the wall overcoming thermal cooling from drying.



KEY FEATURES

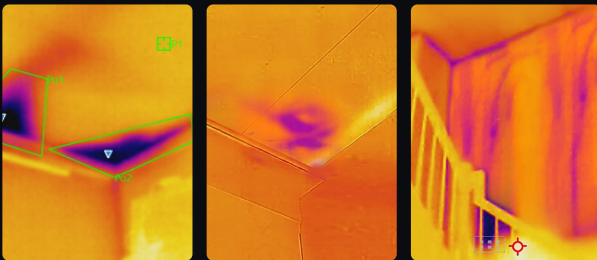
◆ Manual Focus

Adjusting the manual focus ring allows to see objects clearly on targets as close as 0.1 m (0.33 ft) and still capture sharp images and more accurate results from further away.



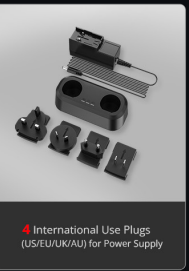
◆ High Image Quality

A highly sensitive VOx detector (NETD < 35 mK), IR resolution up to 384 x 288 (110,592 pixels) provides a distinct thermal vision of the target.



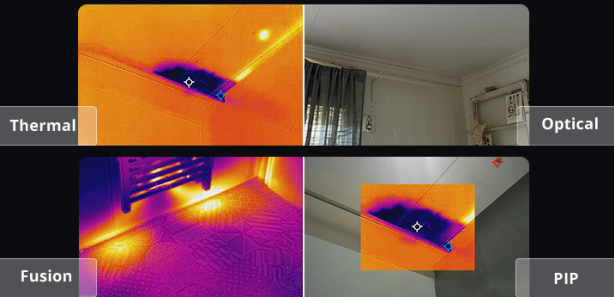
◆ Interchangeable Battery System

Includes 2 interchangeable Li-ion batteries and a dual bay charger to provide you with up to 12 hours of operation. You can stay powered up for even the longest inspections.



◆ Multiple Image Mode

Thermal, Fusion, PIP and Optical modes to suit your preferred.



◆ Multiple Customized Report

Once material analysis is done, you can view the thermography results, save the pictures or export the report as required.

