



HIKMICRO Pocket Series
Pocket Thermal Camera (V5.5.112)
Release Notes

Legal Information

© Hangzhou Microimage Software Co., Ltd.

All rights reserved.

About this Manual

The Manual includes instructions for using and managing the Product. Pictures, charts, images and all other information hereinafter are for description and explanation only. The information contained in the Manual is subject to change, without notice, due to firmware updates or other reasons. Please find the latest version of this Manual at the HIKMICRO website

(www.hikmicrotech.com/).

Please use this Manual with the guidance and assistance of professionals trained in supporting the Product.

Trademarks



HIKMICRO

and other HIKMICRO's

trademarks and logos are the properties of HIKMICRO in various jurisdictions.

Other trademarks and logos mentioned are the properties of their respective owners.

LEGAL DISCLAIMER

TO THE MAXIMUM EXTENT PERMITTED BY APPLICABLE LAW, THIS MANUAL AND THE PRODUCT DESCRIBED, WITH ITS HARDWARE, SOFTWARE AND FIRMWARE, ARE PROVIDED "AS IS" AND "WITH ALL FAULTS AND ERRORS". HIKMICRO MAKES NO WARRANTIES, EXPRESS OR IMPLIED, INCLUDING WITHOUT LIMITATION, MERCHANTABILITY, SATISFACTORY QUALITY, OR FITNESS FOR A PARTICULAR PURPOSE. THE USE OF THE PRODUCT BY YOU IS AT YOUR OWN RISK. IN NO EVENT WILL HIKMICRO BE LIABLE TO YOU FOR ANY SPECIAL, CONSEQUENTIAL, INCIDENTAL, OR INDIRECT DAMAGES, INCLUDING, AMONG OTHERS, DAMAGES FOR LOSS OF BUSINESS PROFITS, BUSINESS INTERRUPTION, OR LOSS OF DATA, CORRUPTION OF SYSTEMS, OR LOSS OF DOCUMENTATION, WHETHER BASED

ON BREACH OF CONTRACT, TORT (INCLUDING NEGLIGENCE), PRODUCT LIABILITY, OR OTHERWISE, IN CONNECTION WITH THE USE OF THE PRODUCT, EVEN IF HIKMICRO HAS BEEN ADVISED OF THE POSSIBILITY OF SUCH DAMAGES OR LOSS. YOU ACKNOWLEDGE THAT THE NATURE OF THE INTERNET PROVIDES FOR INHERENT SECURITY RISKS, AND HIKMICRO SHALL NOT TAKE ANY RESPONSIBILITIES FOR ABNORMAL OPERATION, PRIVACY LEAKAGE OR OTHER DAMAGES RESULTING FROM CYBER-ATTACK, HACKER ATTACK, VIRUS INFECTION, OR OTHER INTERNET SECURITY RISKS; HOWEVER, HIKMICRO WILL PROVIDE TIMELY TECHNICAL SUPPORT IF REQUIRED.

YOU AGREE TO USE THIS PRODUCT IN COMPLIANCE WITH ALL APPLICABLE LAWS, AND YOU ARE SOLELY RESPONSIBLE FOR ENSURING THAT YOUR USE CONFORMS TO THE APPLICABLE LAW. ESPECIALLY, YOU ARE RESPONSIBLE, FOR USING THIS PRODUCT IN A MANNER THAT DOES NOT INFRINGE ON THE RIGHTS OF THIRD PARTIES, INCLUDING WITHOUT LIMITATION, RIGHTS OF PUBLICITY, INTELLECTUAL PROPERTY RIGHTS, OR DATA PROTECTION AND OTHER PRIVACY RIGHTS. YOU SHALL NOT USE THIS PRODUCT FOR ANY PROHIBITED END-USES, INCLUDING THE DEVELOPMENT OR PRODUCTION OF WEAPONS OF MASS DESTRUCTION, THE DEVELOPMENT OR PRODUCTION OF CHEMICAL OR BIOLOGICAL WEAPONS, ANY ACTIVITIES IN THE CONTEXT RELATED TO ANY NUCLEAR EXPLOSIVE OR UNSAFE NUCLEAR FUEL-CYCLE, OR IN SUPPORT OF HUMAN RIGHTS ABUSES. IN THE EVENT OF ANY CONFLICTS BETWEEN THIS MANUAL AND THE APPLICABLE LAW, THE LATTER PREVAILS.

TABLE OF CONTENTS

1	Introduction	1
1.1	Version Information	1
1.2	More Information.....	1
1.3	Upgrade Device.....	2
1.3.1	Upgrade Device with USB	2
1.3.2	Upgrade Device via HIKMICRO Viewer	2
2	New Features	3
2.1	Optimize and Upgrade SuperScene Mode	3
2.1.1	SuperScene Mode Upgrade.....	3
2.1.2	Floor Heating in SuperScene Mode Supports Smart SuperScene	3
2.2	Auto and Manual Calibration Available in the Swipe-down Menu.....	4
2.3	Alarm Supports Measurement Rule Configuration	5
2.4	Ice-water Mix. Emissivity Added.....	5
2.5	Manual Level & Span Supports Persistent or Temporary Saving	5
3	Optimizations	6
4	Removed Functions.....	7
5	FAQ on Upgrade.....	8
5.1	Why my PC failed to detect the camera as a USB drive?.....	8
5.2	What should I do when my PC notifies power surge on the USB port?.....	8
5.3	What should I do when my PC notifies USB device not recognized?.....	8
5.4	What should I do if my PC notifies the USB drive has a problem to be fixed?	9

1 Introduction

The pocket thermography camera is an ideal solution which provides accurate touch-free temperature measurement and heat distribution image display for electrical predictive maintenance, building inspection, HVAC inspection, manufacturing monitor, etc. HIKMICRO's pocket thermal cameras have been used widely in detecting temperature anomalies before detecting radiator efficiency for HVAC inspection, searching for heat loss in buildings, finding hot spots and invisible defects on mechanical or electrical systems that could indicate a potential problem. They are also used for surveying areas that are hard to reach with conventional measurement tools.

This document introduces new features and optimizations in V5.5.112 of Pocket Series.

1.1 Version Information

Item	Description
Firmware Version	V5.5.112 build 260205
Models	Pocket1, Pocket2, PocketC, PocketE, E03

1.2 More Information

- Mobile Client: HIKMICRO Viewer (only for the camera models with Wi-Fi and Hotspot)
<https://www.hikmicrotech.com/en/industrial-products/hikmicro-viewer-software/>
- PC Client for analysis and report: HIKMICRO Analyzer
<https://www.hikmicrotech.com/en/industrial-products/hikmicro-analyzer-software/> or contact technical support for help.
- Welcome to visit our website and see more Compatibility Lists.
<https://www.hikmicrotech.com/en/support/download-center/compatibility/>

1.3 Upgrade Device

1.3.1 Upgrade Device with USB

Before upgrading your camera, make sure:

- Fully charge your camera.
- Auto Power-off function is turned-off to avoid accidental suspension during upgrading.

1. Download new firmware from our website (<https://www.hikmicrotech.com/en/industrial-products/pocket-thermal-camera/>), and save it to your PC.
2. Use supplied USB cable (USB-C to USB-A) to connect the device to PC.
3. Open the detected disk on your PC.
4. Unzip the firmware, and copy and paste the .dav file to the root directory of the disk.
5. Disconnect the device from PC and reboot the device to start upgrading automatically. The upgrading lasts several minutes, please wait for the process to complete.

1.3.2 Upgrade Device via HIKMICRO Viewer

Before You Start

Scan the QR code below to download and install HIKMICRO Viewer on your phone.



Android



iOS

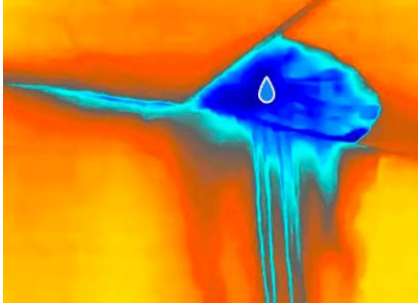

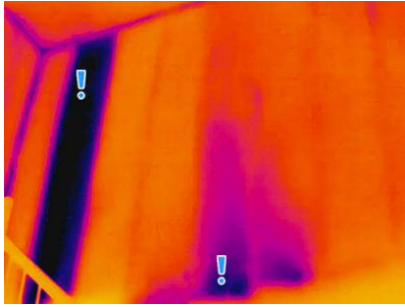
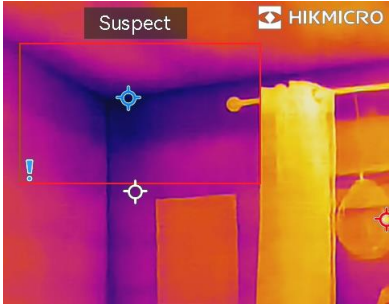
1. Launch HIKMICRO Viewer on your phone.
2. Upgrade the device. You can choose one of the following paths:
 - In the home screen, tap **Device Upgrade > Check for Updates**.
 - In the home screen, tap **Device Info > Device Upgrade > Check for Updates**.

2 New Features

2.1 Optimize and Upgrade SuperScene Mode

2.1.1 SuperScene Mode Upgrade

- Renamed Scene Mode to **SuperScene Mode**, and SuperScene (Beta) to **Smart SuperScene**.
- Upgraded **Smart SuperScene**.

Scene	Before	After
Water Leak		
Insulation		

2.1.2 Floor Heating in SuperScene Mode Supports Smart SuperScene

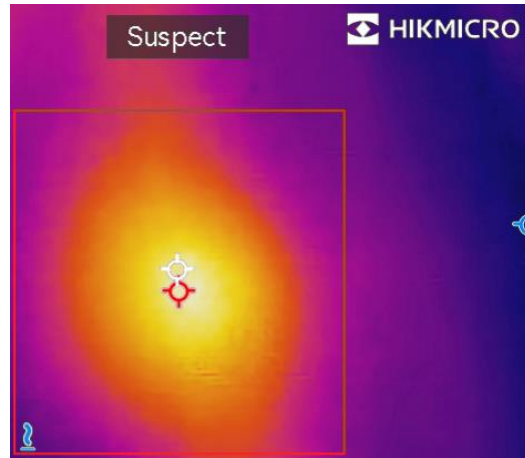


Pocket1 does not support **SuperScene Mode**.



Use the **Floor Heating** scene to detect and observe the faults of floor heating system.

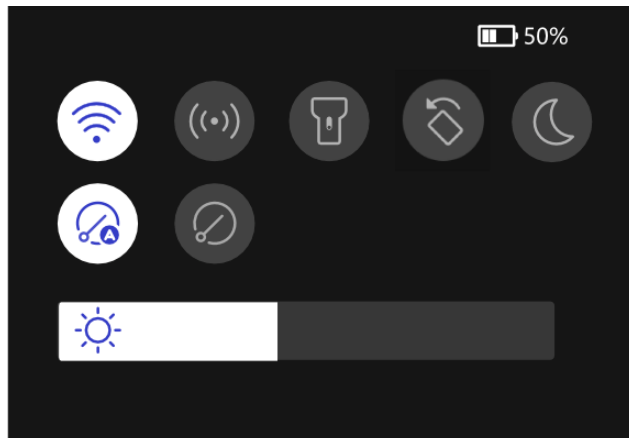
Smart SuperScene technology can assist in fast recognition for anomalies during floor heating detection. When **Smart SuperScene** is enabled and heat

anomalies are detected, **Suspect** and a red frame will be displayed on the live view interface.




2.2 Auto and Manual Calibration Available in the Swipe-down Menu

In the swipe-down menu, tap  to enable auto calibration or tap  to initiate manual calibration.



<i>Icon</i>	<i>Description</i>
-------------	--------------------

	The device will automatically implement Flat Field Calibration (FFC) after you turn it on. During correction, the device emits a "click" sound, and the screen freezes briefly.
---	---

- The device will implement Flat Field Calibration (FFC) one time after you tap the icon. Suitable for complex environments, this avoids frequent automatic corrections interrupting operations.



2.3 Alarm Supports Measurement Rule Configuration

In the alarm settings interface, set **Measurement** rule as **More Than** or **Less Than** as needed.



- When the target temperature exceeds the set value, it turns red.
 - When the target temperature falls below the set value, it turns blue.
-

2.4 Ice-water Mix. Emissivity Added

Emissivity directly affects the measurement accuracy. You can now quickly adjust the emissivity using the newly added preset value for **Ice-water Mix**.

2.5 Manual Level & Span Supports Persistent or Temporary Saving

After adjusting the upper and lower limits of the display temperature range in manual **Level & Span**, tap **Persist Saved** or **Temp Saved** at the bottom of the screen.

- **Persist Saved**: the current manual mode settings will be retained after restarting the device.
- **Temp Saved**: the current manual mode settings will not be retained after restarting, and the device will revert to automatic mode.

3 Optimizations

- Updated storage display in the swipe-down menu to show **Available Storage / Total Storage**.
- Disabled **Auto Power-Off** by default. A second confirmation is required during setup.
- Added a startup prompt for the first launch after an upgrade.
- Improved guidance for emissivity and distance settings.
- Disabled **SuperTemp** by default, and moved it into **Device Settings**.
- Reduced calibration freeze time. (Only PocketE and E03 are supported)

4 Removed Functions

- Removed **Auto-Sleep**.
- Removed **Alert Threshold** from the Alarm settings.

5 FAQ on Upgrade

5.1 Why my PC failed to detect the camera as a USB drive?

Check the following items:

- Use a good quality USB-C to USB-A cable to connect your PC to your camera. The supplied cable is recommended. Normally, a cable should be able to charge a camera and transfer data.
- Select USB Drive as the USB mode.
- Keep the camera powered on.

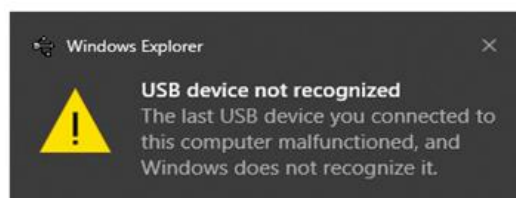
5.2 What should I do when my PC notifies power surge on the USB port?



Check the following items:

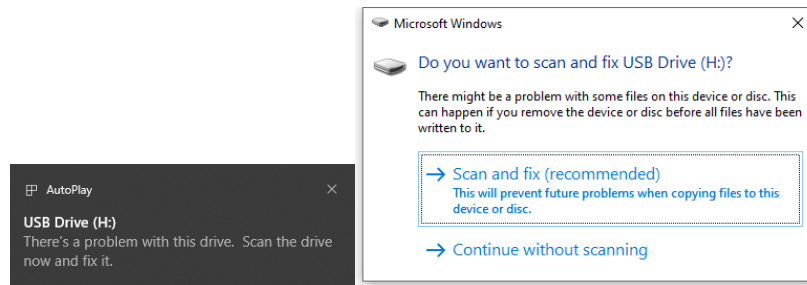
- When you are looking for an adapter of USB-C to USB-A, please choose an unpowered hub. A powered hub such as Surface Dock Station is not compatible.
- If you are using a built-in USB PowerShare port in your PC, please try another port.

5.3 What should I do when my PC notifies USB device not recognized?



In most cases, it does not affect use. You can just ignore the prompt and find the detected USB drive in **This PC**.

5.4 What should I do if my PC notifies the USB drive has a problem to be fixed?



Some Windows computers will scan a USB drive when it is connected, and show the error. Click scan and fix, Windows will confirm the drive is fine and connect to it. You can also skip scanning and find the detected USB drive in **This PC**, which does not affect use in most cases.



HIKMICRO

See the World in a New Way