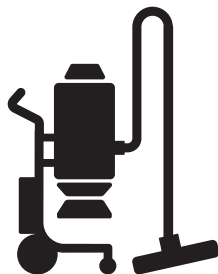




Husqvarna®



W 70, W 70 P, W 250 P

EN	Operator's manual	2-13
FR	Manuel d'utilisation	14-26
NL	Gebruiksaanwijzing	27-39
DE	Bedienungsanweisung	40-52

Contents

Introduction.....	2	Troubleshooting.....	9
Safety.....	5	Transportation, storage and disposal.....	10
Assembly.....	6	Technical data.....	11
Operation.....	7	EC Declaration of Conformity.....	13
Maintenance.....	8		

Introduction

Product description

The Husqvarna Wet industrial vacuum cleaner is a slurry collector. The liquids are sucked through the inlet valve at high speed via the suction hose. The liquid is collected in a container. The pump variants offer the possibility to evacuate the liquid via the evacuation pump.

On variants without the evacuation pump the liquid can be drained by the evacuation valve.

A floating device protect the motor from liquid.

The W 70 and W 70 P have an extra filter to filter the slurry foam from particles.

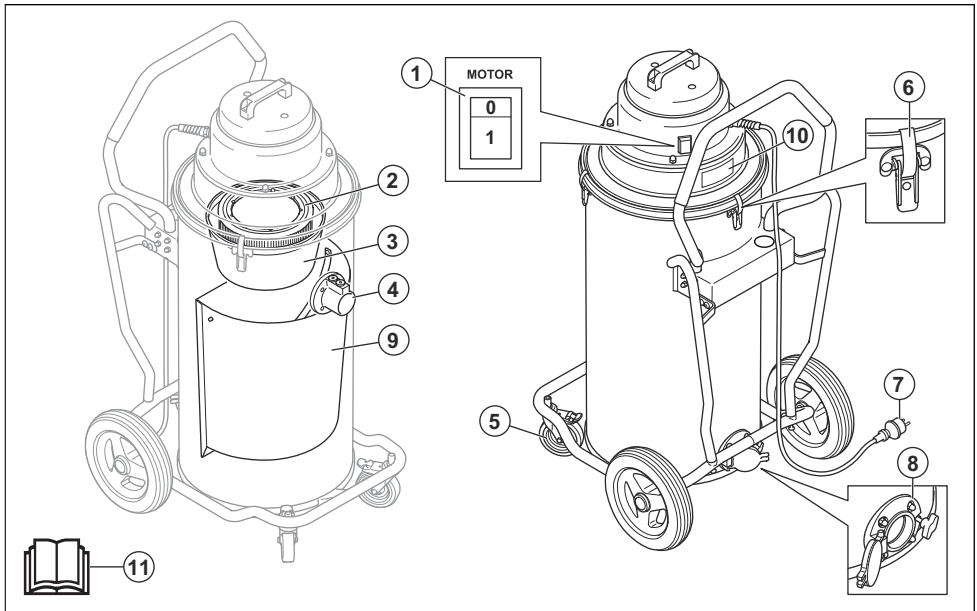
To protect the product and prolong the lifetime it is always recommended to use bags to collect and filter the largest particles.

Intended use

The product is intended for domestic and commercial use to vacuum and collect liquid none explosive, flammable or combustible.

The W 70 and W 70 P can be used for dry applications temporarily. Dry bags should then always be used and the filter should be changed to a Hepa filter, sold as an accessory.

Product overview W 70



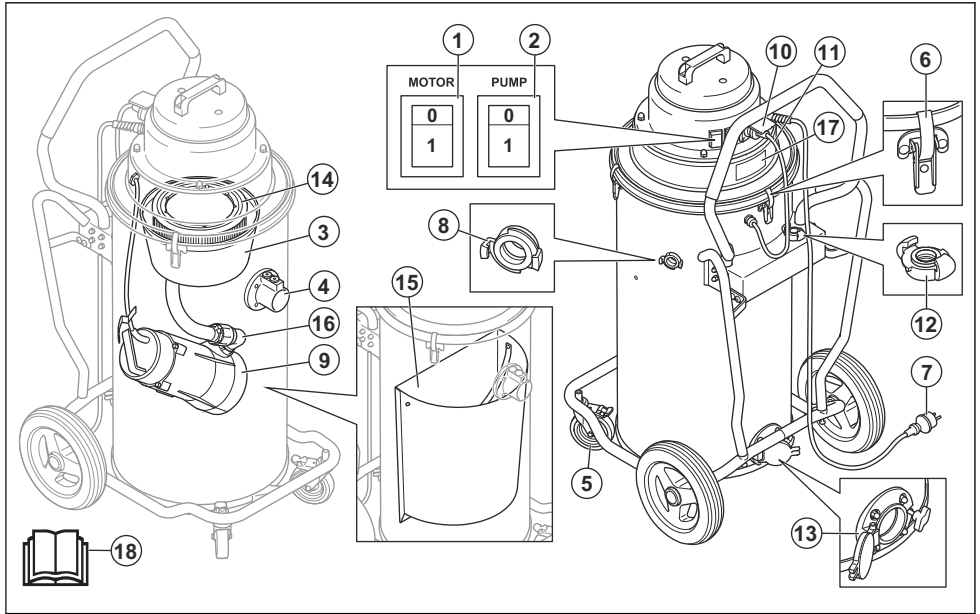
- 1. On/off switch for the motor
- 2. Filter

- 3. Float
- 4. Inlet valve

- 5. Lockable caster wheels
- 6. Toggle fastener
- 7. Power cable
- 8. Evacuation valve

- 9. Stainless steel strainer
- 10. Type plate
- 11. Operator's manual

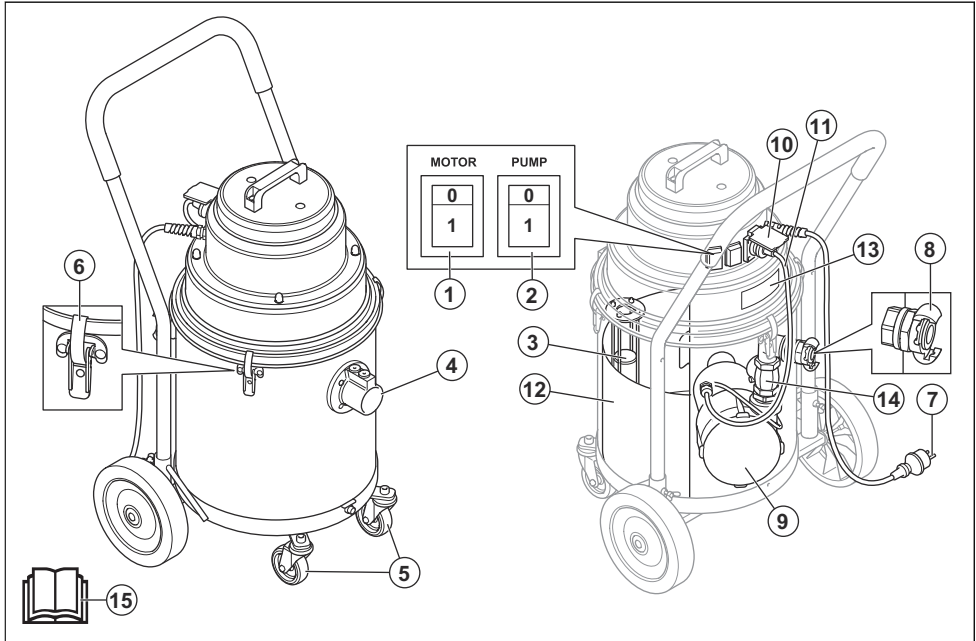
Product overview W 70 P



- 1. On/off switch for the motor
- 2. On/off switch for the pump
- 3. Float
- 4. Inlet valve
- 5. Lockable caster wheels
- 6. Toggle fastener
- 7. Power cable
- 8. Outlet
- 9. Pump

- 10. Socket outlet for the pump cable
- 11. Pump cable
- 12. Adapter for evacuation hose
- 13. Evacuation valve
- 14. Filter
- 15. Stainless steel strainer
- 16. Check valve
- 17. Type plate
- 18. Operator's manual

Product overview W 250 P



1. On/off switch for the motor
2. On/off switch for the pump
3. Float
4. Inlet valve
5. Caster wheels
6. Toggle fastener
7. Power cable
8. Outlet
9. Pump
10. Socket outlet for the pump cable
11. Pump cable
12. Stainless steel strainer
13. Type plate
14. Check valve
15. Operator's manual



Always use approved ear protection.



Always use approved eye protection.

Product liability

As referred to in the product liability laws, we are not liable for damages that our product causes if:

- the product is incorrectly repaired.
- the product is repaired with parts that are not from the manufacturer or not approved by the manufacturer.
- the product has an accessory that is not from the manufacturer or not approved by the manufacturer.
- the product is not repaired at an approved service center or by an approved authority.

Symbols on the product



Please read the operator's manual carefully and make sure you understand the instructions before using the product.



Always use an approved breathing mask.

Safety

Safety definitions

Warnings, cautions and notes are used to point out specially important parts of the manual.



WARNING: Used if there is a risk of injury or death for the operator or bystanders if the instructions in the manual are not obeyed.



CAUTION: Used if there is a risk of damage to the product, other materials or the adjacent area if the instructions in the manual are not obeyed.

Note: Used to give more information that is necessary in a given situation.

General safety instructions



WARNING: Read the warning instructions before you use the product.

- Read the operator's manual carefully and understand the instructions before using the product. Save all warnings and instructions for future reference.
- Make sure that you read and understand the instructions for the main product manual to ensure that you know what personal equipment to wear, what safety equipment to use and how to work in a safe mode.
- Always exercise care and use your common sense. If you get into a situation where you feel unsafe, stop and seek expert advice. Contact your dealer, service agent or an experienced user. Do not attempt any task that you feel unsure of!
- Keep in mind that it is you, the operator that is responsible for not exposing people or their property to accidents or hazards.
- The product must be kept clean. Signs and stickers must be fully legible.
- This product is not intended for use by persons (including children) with reduced physical, sensory or mental capabilities, or lack of experience and knowledge.
- Never use a product that is faulty. Carry out the safety checks, maintenance and service instructions described in this manual. Some maintenance and service measures must be carried out by trained and qualified specialists. Refer to *Maintenance on page 8*.



WARNING: Read the warning instructions that follow before you use the product.

- The product is equipped with a safety thermal protector to prevent motor from overheating. Should thermal protector activate, turn off machine, unplug power cord and check for full dust bag, vacuum hose clog or filter blockage. It may take up to 45 minutes for the thermal protector to reset.
- Before using the product make sure that the power & voltage corresponds with the voltage shown on the machines rating plate, including extension cords.
- Connect to a properly grounded outlet only. Refer to *Grounding instructions on page 7*.
- Improper connection of the equipment-grounding conductor can result in a risk of electrical shock. Check with a qualified electrician or service person if you are in doubt as to whether the outlet is properly grounded. Do not modify the plug provided, if it will not fit the outlet have a proper outlet installed by a qualified electrician.
- If using an extension cord make sure the cord rating is suitable for this machine.
- Cables damaged through crushing or splitting can be dangerous if used and should be replaced immediately.
- Do not use with damaged cord or plug. If the machine is not working as it should, has been dropped, damaged, left outdoors or dropped in water. Make sure it is repaired by a qualified person to avoid hazard.
- Regularly inspect cord and plug for damage. Do not use with a damaged cord or plug.
- Do not pull or carry by cord, use cord as handle, close a door on cord, or pull cord around sharp edges or corners. Do not allow equipment to run over cord. Keep cord away from heated surfaces.
- Do not unplug by pulling on cord. To unplug, grasp the plug.
- Do not leave machine when plugged in. Unplug cord from outlet when not in use and before cleaning or servicing machine.

Safety instructions for assembly



WARNING: Read the warning instructions that follow before you assemble the product.

- Do not change a part of the product without approval from the manufacturer.

- Unauthorized modifications and/or accessories may lead to serious injury or death to the user or others.
- Use only as described in this manual. Use only manufacturers recommended attachments.
- Always use genuine accessories.
- Make sure the assembly area is firm, so the dust extractor does not tip over. Risk of personal and material injury.
- Be careful, the toggle fasteners can cause damage to the operator when assemble the product.

- Turn off all controls before unplugging.
- To reduce the risk of electric shock, always install the floating device before any wet pick-up operation.
- Use extra care when cleaning on stairs.
- Keep children and unauthorized persons away from the product when in use.
- To reduce the risk of electric shock – Do not expose to rain. Store indoors.
- Replace collection system and/ or filters as described in this manual. Refer to *To replace filters on page 9.*

Safety instructions for operation



WARNING: Read the warning instructions that follow before you use the product.

- The product must not be used in environments near explosive gases.
- Do not use to pick up flammable or combustible liquids, such as gasoline, or use in areas where they may be present.
- Do not put any object into openings. Do not use with any openings blocked. Keep free of dust, hair and anything that may reduce airflow.
- Do not point the suction hose in the direction of body parts when the machine is running. Do not put parts of the body against the suction inlet if the suction hose is not installed.
- Keep hair, loose clothing, fingers and all parts of body away from openings and moving parts.
- Do not use for dry application without dust bag and/or filters in place.
- Do not allow to use as a toy. Close attention is necessary when used by or near children.
- Operators shall be adequately instructed on the use of the product.



WARNING: Read the warning instructions that follow before you use the product.

- Health impairing dust can be spread during filter and bags replacement. Accordingly, the user should wear protective glasses, protective gloves, and a breathing mask conforming to protection class FFP3.

Safety instructions for maintenance



WARNING: Read the warning instructions that follow before you use the product.

- All repairs must be performed by a qualified service person. Use only manufacturer-supplied or equivalent replacement parts.
- Make sure, when the product is lifted, that the waste container is empty and that no body stay below the product.

Assembly

Introduction



CAUTION: Only use extension cable with correct rated value for this product.



CAUTION: Do not keep water or wet dirt in the suction device. That can cause bad smells and defective hygiene.

General

Do a check that the following accessories are included:

- The hose with end fittings
- Steel tube
- Floor Nozzle
- Crevice tool
- 1 bag for slurry collection

If 1 of the parts is missing, speak to your local service agent .

Make sure to dispose the package and the used product components in correct procedure. Refer to local disposal regulations. Make sure to recycle.

Operation

Introduction



WARNING: Before you operate the product, carefully read and understand the safety chapter and the operation instructions.

Before use



WARNING: Connect the power plug to a power outlet with the correct voltage, see the type plate.

Grounding instructions



WARNING: The product must be grounded. If it should malfunction or breakdown, grounding provides a path of least resistance for electric current to reduce the risk of electric shock. The product is equipped with a cord having an equipment-grounding conductor and grounding plug. The plug must be inserted into an appropriate outlet that is properly installed and grounded in accordance with all local codes and ordinances.

To connect the correct evacuation hose

The adapter fit most 25 mm/ 1 inch hoses.

- Use the attached adapter.
- Fit the adapter on the hose end.
- Attach the adapter to the outlet.

To attach the suction hose

There is a hose intake with a hose lock on the product. The hose lock makes sure that the suction hose adapter do not fall off.

1. Lift the hose lock and attach the suction hose adapter.
2. Lower the hose lock into the recess of the adapter.

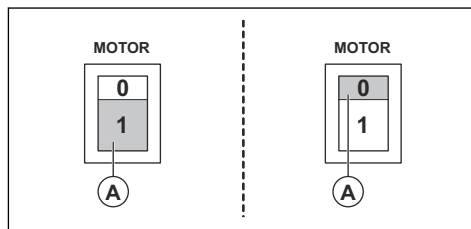
To attach the nozzle on the hand pipe

The floor nozzle has adjustable wheels. Adjust the wheels to get the best suction effect. Adjust the wheels with the knob, which is on the rear side of the nozzle. The wheels and rubber strips of the nozzle can be replaced. Keep the nozzle in good condition.

To start and stop the W 70

- Push the button (1) to start the product.

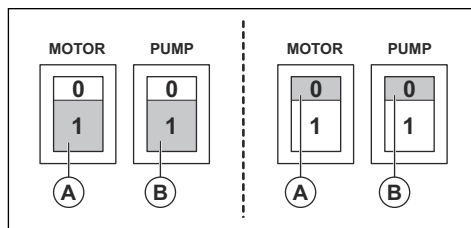
- Push the button (0) to stop the product.



To start and stop the W 70 P and the W 250 P

The motor switch is the button A and the pump switch is the button B referring to the figure.

- Push the button (1) to start the product.
- Push the button (0) to stop the product.



After use

1. Switch off the suction apparatus with the switch.
2. Disconnect the power cord. Do not remove the pump cable.
3. Empty and clean the suction apparatus and the accessories used. Refer to *To attach the suction hose on page 7* and *To clean the product on page 9*.

To change the bag

1. Disconnect the power cord and remove the pump cable.
2. Loosen the 3 toggle fasteners and remove the top.
3. Lift out the float.
4. Remove and dispose the old bag. Refer to local regulations.
5. Insert the new bag into the stainless steel strainer.
6. Thread the small opening over the internal inlet pipe. Let the tab rest over the container rim.
7. Do step 1-3 in reversed order.

Maintenance

Introduction



WARNING: Most accidents involving machines occur during trouble shooting, service and maintenance as staff have to locate themselves within the risk area of the machine. Prevent accidents by being alert and by planning and preparing the work.



WARNING: Before you do maintenance of the product, make sure that the motor switch and the pump switch are in the Off positions.

Disconnect the power cord and remove the pump cable.



WARNING: All checks that involve electric components should only be performed by a licensed electrician.



WARNING: Do not puncture the filter. Risk of dust dispersion.

Maintenance schedule

The maintenance intervals are calculated from daily use of the product. The intervals change if the product is not used daily.

Maintenance	Before each use	After every use	Daily	Weekly	6 months or 1000h	12 months or 2000h
Look for signs of wear, damage or loose connections of the controls before the unit is connected.	X					
Empty and clean the tank and the accessories.		X				
Do a check of the filters. ¹			X			
Do a check of the wheels. Look for damage and bad connections. Castor wheel locks should be working in order.				X		
Do a check of the function of the one-way valve on P-variants.				X		
Do a check of the hose attachments for mechanical wear. Make sure that the sealing has full function.				X		
Change of filter ²						X
Do a check of the hose gasket and the sealing.			X			

¹ Only applicable on W 70 and W 70 P.

² Only applicable on W 70 and W 70 P.

To clean the product



WARNING: Make sure that the motor switch and the pump switch are in the Off positions, before cleaning the product. Disconnect the power cord. Do not remove the pump cable

It is important to clean the product to prevent damage and circulation of dangerous waste. Always clean the product before it is moved from the work area. If the product has to be used for other purposes, it is extremely important that the product will be cleaned, to avoid spreading of hazardous material.

After running slurry through the pump, flush the system with significant amount of fresh water. Do not leave slurry in the pump or bottom of the tank. This will cause damage to the pump and the slurry will harden and clog the system. When using the unit dry and then switching to wet, or vice versa, make sure the filters are cleaned properly and thoroughly to not have build up or clogging in the system.

All parts that are contaminated after service work must be disposed in a correct procedure in plastic bags. Refer to local regulations.

- Use correct personal equipment when you clean the product. Refer to *Personal protective equipment on page 6*
- Clean the external surface with a moist cloth.
- Clean the filters and the slurry collector in applicable area.
- Flush the system with fresh water to thoroughly clean the pump.

Filter change



WARNING: Use personal safety equipment, refer to *Personal protective equipment on*

page 6, during filter change. Dust can come out during filter change.



WARNING: Always turn the motor switch in the Off position and disconnect the cord from the wall outlet during filter change.

To replace filters

Only W 70 and W 70 P have an extra filter to slurry foam from particles.

1. Disconnect the power cord. Remove the pump cable.
2. Loosen the 3 toggle fasteners to remove the top.
3. Lift off the filter holder with the filter.
4. Loosen the nut on the filter holder and remove the filter cap and the filter.
5. Do a check of the gasket on the filter holder. Replace the gasket if it is damaged.
6. Assemble the new filter.
7. Clean all other parts.

Floating device

A floating device protect the motor from liquid.

- Visually inspect the floating device regularly to ensure that it is not damaged and free of obstructions.

When the floating device is being activated, the motor needs to be switch off and water has to be evacuated before the motor is turned on.

Troubleshooting

Troubleshooting schedule

Issue	Cause	Solution
Motor does not start	No power	Connect the product
	Cable defective	Replace the cable
	Switch defective	Replace the switch
Motor stops immediately after starting	Wrong fuse	Connect to correct fuse
	Shortcut in cable/machine	Order service

Issue	Cause	Solution
Motor runs but there is not suction	Hose not connected	Connect the hose
	Hose blocked	Clean hose
	Floating device activated.	Inspect water level and damages on the float.
Motor runs but there is poor suction	Hole on the hose	Replace hose
	Filter clogged	Clean filter/ Replace filter
	Loose suction unit	Adjust
	Dirt in the hose or intake	Clean the hose and intake
	Defective gaskets	Replace affected gaskets
	Blocked or defective check valve.	Clean or replace the check valve.
Dust blown from motor	Wrongly assembled or damaged filter system ³	Adjust/ Replace filters
Poor pumping	The pump or tubes are blocked ⁴	Clean the pump, check valve and hose
Abnormal noise		Order service

Transportation, storage and disposal

Transportation of the product

- The unit must be securely fasten during transportation.
- Where possible, always transport in closed vehicle.
- Avoid transporting in adverse weather condition.
- Use ramps or winches to lift the dust extractor to make sure that movements are safe. Get aid if you are not sure about how to lift heavy equipment.
- Engage the locking caster safely on the wheels.
- Secure the equipment during transportation in order to avoid transport damage and accidents.
- It is recommended to transport the product upright where possible.
- It is recommended to empty the product before transportation.

Storage of the product

- The product must be stored inside away from outdoor elements.
- Do not expose the product to rain or moisture.
- Attach the locking casters safely. Only applicable on W 70 and W 70 P.
- Disconnect the product from the power source.

- Store the product and the equipment in a dry area with no frost or excessive heat.
- Store all equipment in an locked area, so that it is out of reach of children and unauthorized persons.

Disposal of the product

- Obey the local recycling requirements and applicable regulations.
- When the product no longer is used, send it to a dealer or discard it at a recycling location.

³ Only applicable on W 70 and W 70 P.

⁴ Only applicable on W 70 P and W 250 P.

Technical data

Technical data

Data	W 70 110V	W 70 230V	W 70 P 110V	W 70 P 230V	W 250 P 230V
Voltage (1 phase), V	110-120	220-230	110-120	220-230	220-230
Frequency, Hz	50-60	50-60	50	50-60	50
Motor Power, kW (HP)	1.2 (1.6)	1.2 (1.6)	1.8 (2.4)	1.85 (2.5)	1.55 (2.1)
Current (max), A	8	5	15	8	5
Airflow, m ³ /h (CFM)	200 (118)	200 (118)	200 (118)	200 (118)	160 (95)
Vacuum, kPa (psi)	24 (94)	22 (88)	24 (94)	22 (88)	22 (88)
Water lift, m (in.)	2.5 (100)	2.3 (90)	2.5 (100)	2.3 (90)	2.3 (90)
Main Hose diameter, mm (in.)	38 (1.5)	38 (1.5)	38 (1.5)	38 (1.5)	38 (1.5)
Main Hose length, m (ft)	3 (10)	3 (10)	3 (10)	3 (10)	3 (10)
Inlet diameter, mm (in.)	38 (1.5)	38 (1.5)	38 (1.5)	38 (1.5)	38 (1.5)
Filter (Yes/ No)	Yes	Yes	Yes	Yes	No
Filter area m ² (ft ²)	0.6 (6.5)	0.6 (6.5)	0.6 (6.5)	0.6 (6.5)	N/A
Dust collection system (Type), l (gal)	Disposable bag or Stainless steel container, 70 (18.5)	Disposable bag or Stainless steel container, 70 (18.5)	Disposable bag or Stainless steel container, 70 (18.5)	Disposable bag or Stainless steel container, 70 (18.5)	Disposable bag or Stainless steel container, 29 (7.66)
Evacuation pump (Yes/ No)	No	No	Yes	Yes	Yes
Pump Power (max), kW (HP)	N/A	N/A	0.6 (0.8)	0.65 (0.87)	0.35 (0.47)
Pump Current (max) A	N/A	N/A	5	3	1.6
Pump Waterlift, m (ft)	N/A	N/A	9 (30)	9 (30)	6 (20)
Pump discharge, l/min (gal/min)	N/A	N/A	204 (54)	260 (69)	150 (39)
Dimension (LxWxH), mm (in.)	600x570x1250 (23.6x22.4x49.2)	600x570x1250 (23.6x22.4x49.2)	600x570x1250 (23.6x22.4x49.2)	600x570x1250 (23.6x22.4x49.2)	530x520x910 (20.9x20.5x35.8)
Weight, kg (lbs)	34 (75)	34 (75)	44 (97)	44 (97)	27 (59)
Sound power level L _{WA} measured, dB(A) ⁵	86	86	86	86	85
Sound pressure level L _{PA} at the operators ear, dB(A) ⁶	76	76	76	76	74

⁵ Noise emissions in the environment measured as sound power (LWA) in conformity with EN 60335-2-69. Uncertainty Kwa 2dB.

⁶ Noise pressure level according to EN 60335-2-69. Uncertainty KPA 2dB.

Data	W 70 110V	W 70 230V	W 70 P 110V	W 70 P 230V	W 250 P 230V
Vibration level a_n , m/s^{27}	≤ 2.5				

⁷ Vibration level according to EN 60335-2-69. Reported data for vibration level has a typical statistical dispersion (standard deviation) of $1 m/s^2$

EC Declaration of Conformity

EU Declaration of Conformity

CE

(Applies to Europe only)

We, Husqvarna AB, SE-561 82 Husqvarna, Sweden, Tel
+46 3614 6500 declare on our sole responsibility that
the product:

Description	Wet industrial vaccum cleaner
Brand	Husqvarna
Type / Model	W 70, W 70 P, W 250 P
Identification	Serial numbers dating from 2019 and onwards

complies fully with the following EU directives and
regulations:

Directive/Regulation	Description
2006/42/EC	"relating to machinery"
2011/65/EU	"relating to restriction of hazardous substances"

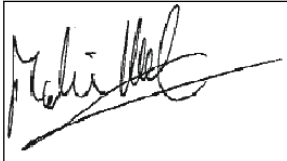
and that harmonized standards and/ or technical
specifications are applied as follows;

EN ISO 12100:2010

EN 60335-1:2012/A11:2014/ AC:2014

EN 60335-2-69:2016

Partille, 2019-02-28



Martin Huber

Global R&D Director

Responsible for technical documentation